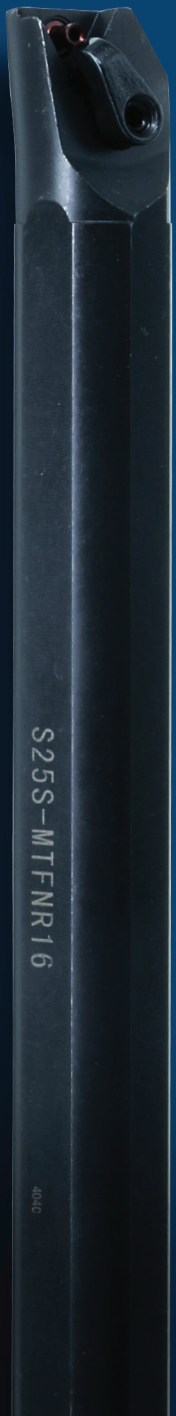




metaldur

CUTTING TOOLS

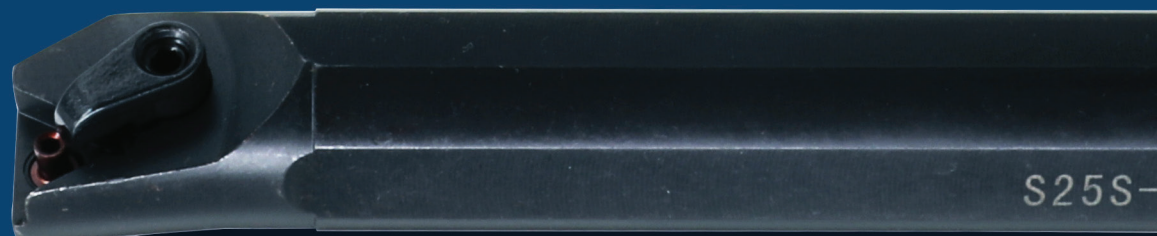
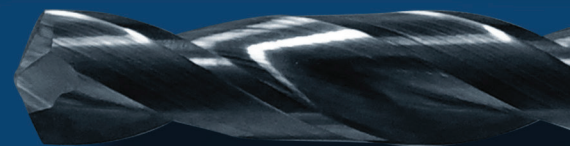
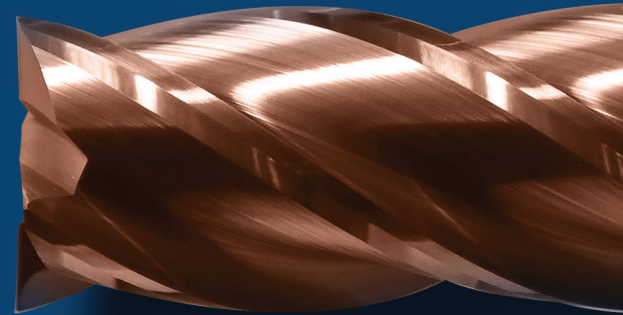
PRECISION POWER PERFORMANCE

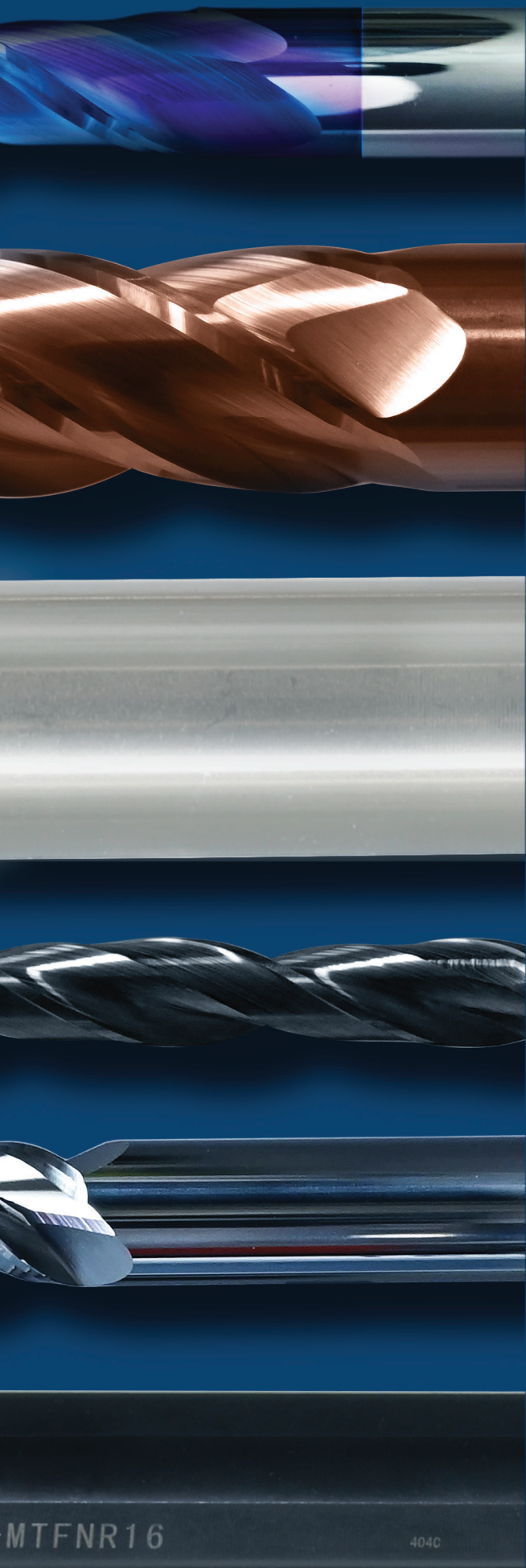


POWERED BY CARBIFORCE

WHY METALDUR?

- * Metaldur is powered by Carbiforce Pvt. Ltd. and has been introduced with a singular vision – to create a brand that is truly price-centric while maintaining the highest standards of quality.
- * In today's CNC industry, customers demand not only precision and reliability but also cost-efficiency, and Metaldur is the answer that demand. With the strong foundation of Carbiforce's expertise and commitment to innovation, Metaldur promises to deliver carbide tooling solutions at the most competitive prices in India, supported by the assurance of uncompromised quality.
- * Metaldur stands as a brand that redefines value, ensuring that customers receive world-class products at the lowest possible rates.





**LOWEST
PRICE
GAURANTEED
IN INDIA
WITH OUT
COMPROMISE
IN QUALITY**

MTFNR16

404C

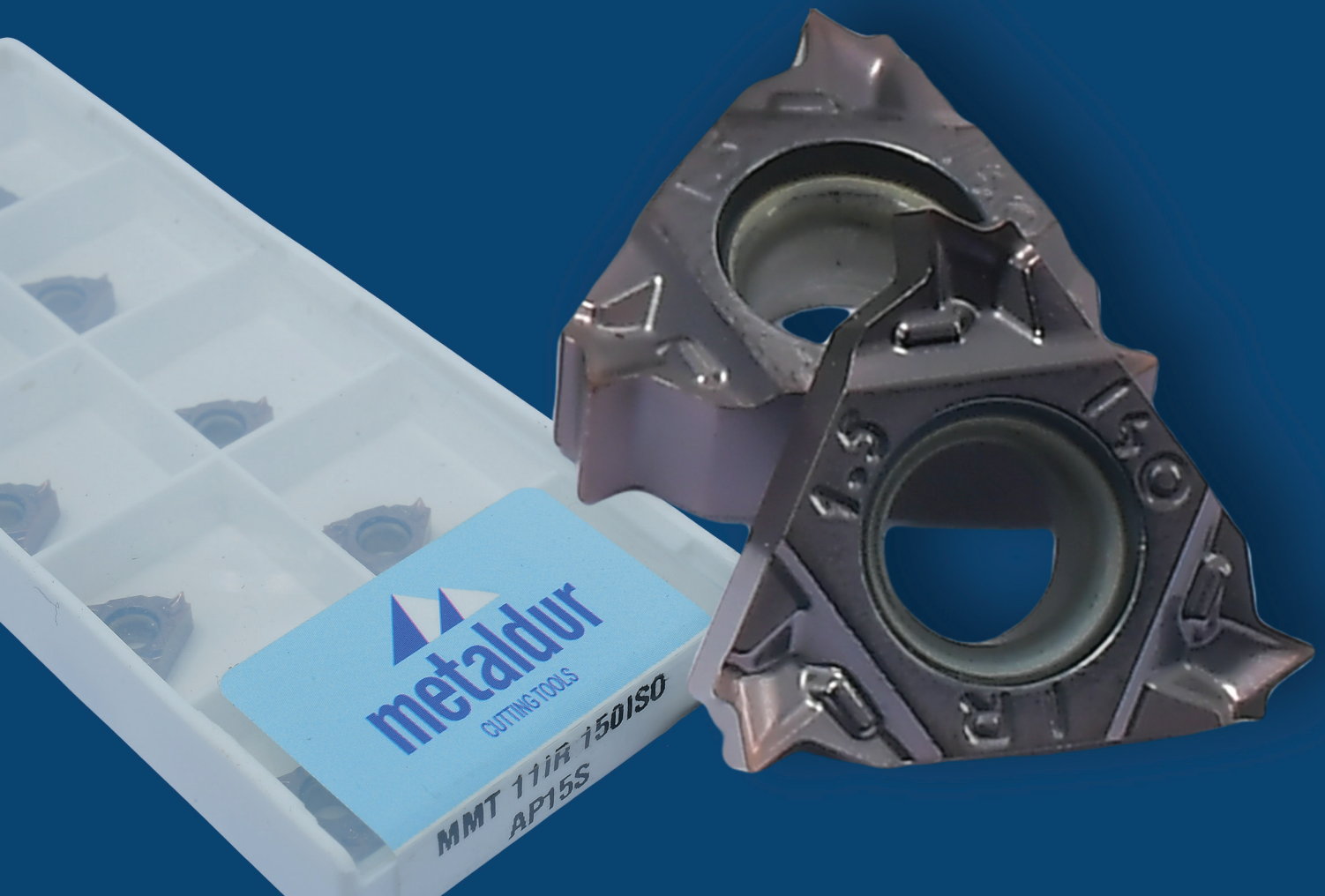
INSERTS

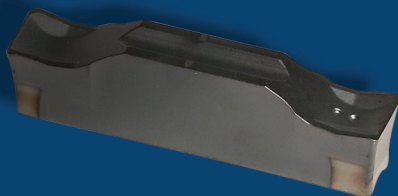
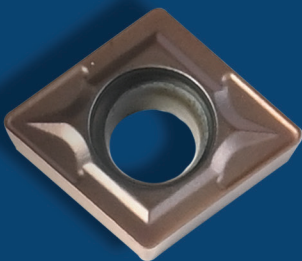
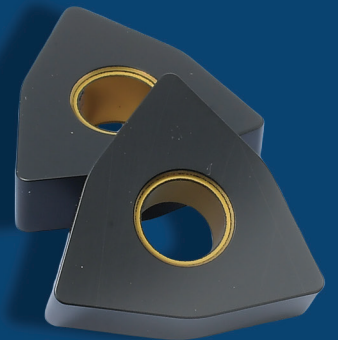
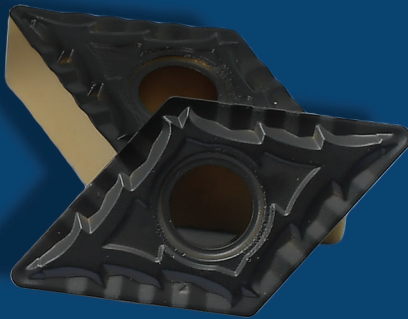
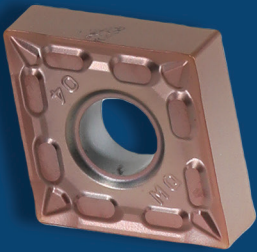
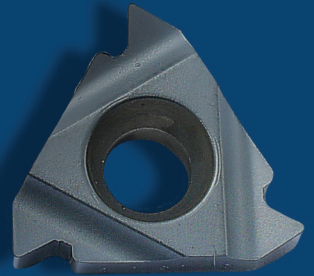
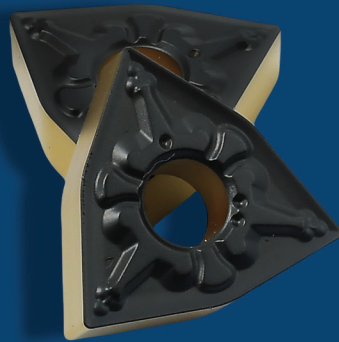
Technical highlights

- * Iso-standard carbide inserts for roughing & Finishing.
- * Advanced pvd/cvd coatings for wear resistance.
- * Chipbreaker geometries for steels, stainless steel, and cast iron.

Marketing value

- * Longer tool life = reduced tooling cost.
- * Consistent surface finish = fewer reworks.
- * Multi-material versatility = one solution for many Jobs.





MDAL INSERTS

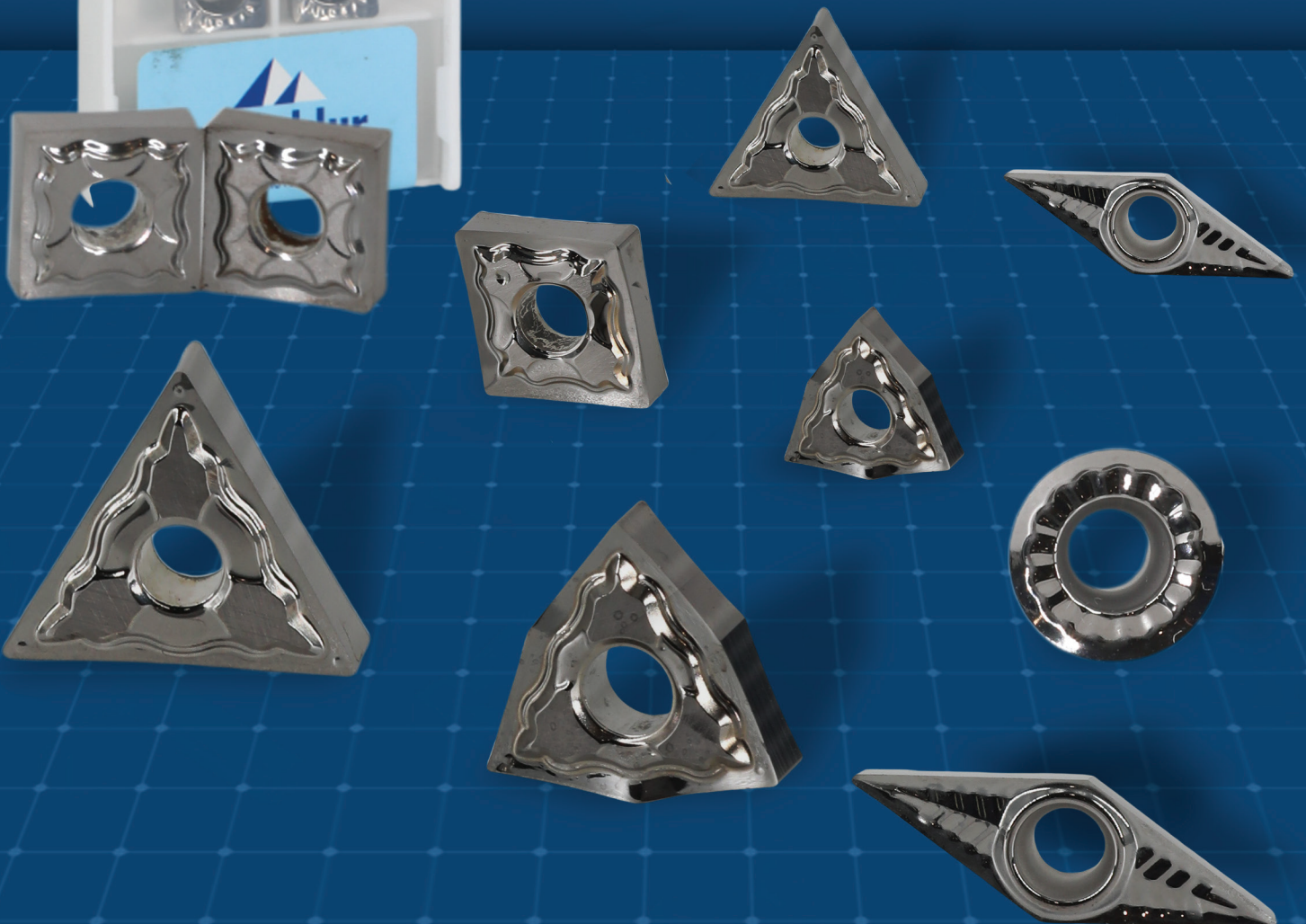


Technical Highlights

- * Iso-standard carbide inserts for roughing & Finishing.
- * Advanced pvd/cvd coatings for wear resistance.
- * Chipbreaker geometries for steels, stainless steel, and cast iron.

Marketing value

- * Longer tool life = reduced tooling cost.
- * Consistent surface finish = fewer reworks.
- * Multi-material versatility = one solution for many Jobs.



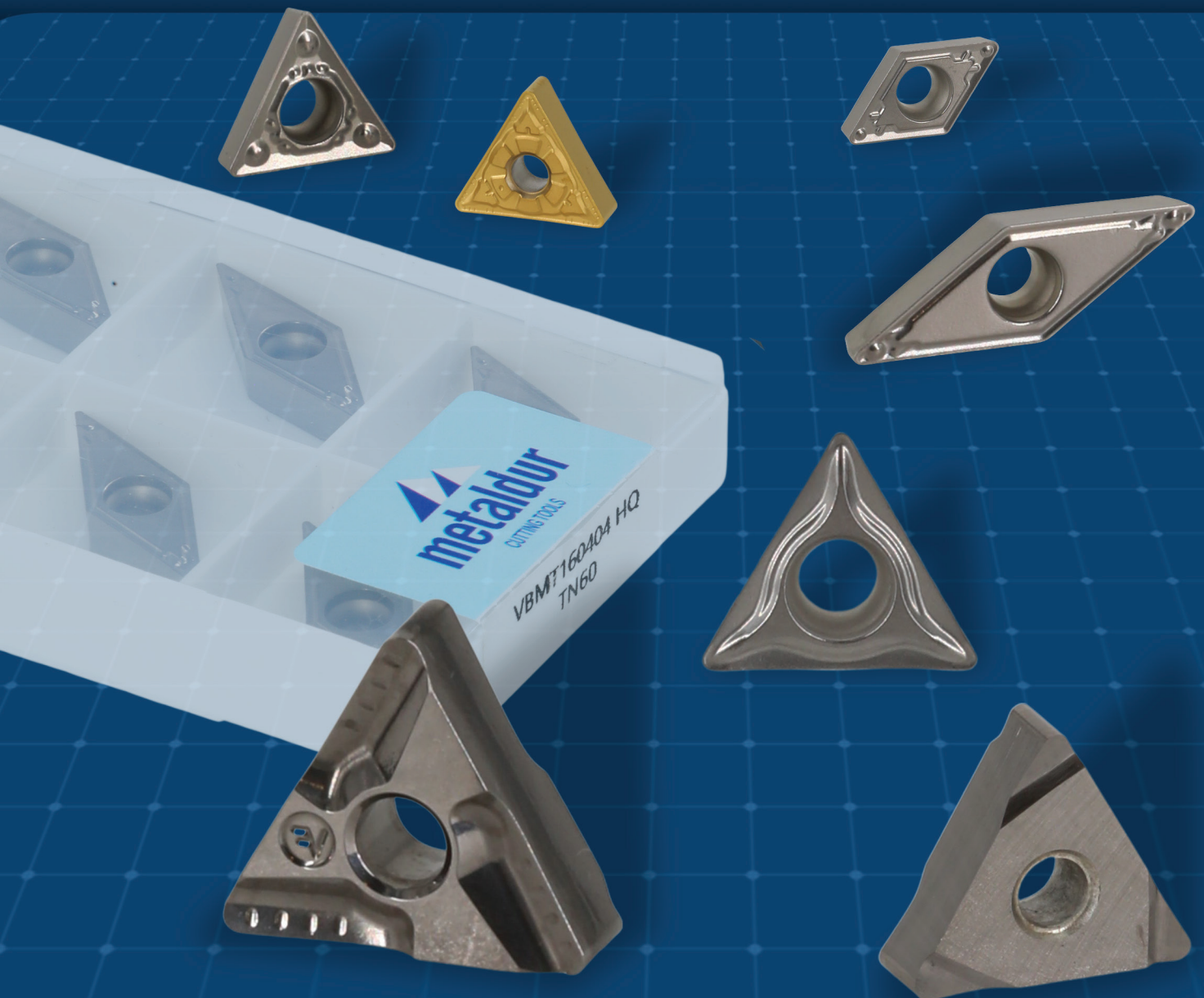
MDC INSERTS

Technical Highlights

- * Titanium-Based Ceramic-Metal Composite
- * Inserts With High Hot-Hardness.
- * Ideal For Finishing Steels, Alloy Steels, and Sintered Metals.
- * Available In Negative & Positive Geometries With Multi-Layer Coatings.

Marketing Value

- * Exceptional Surface Finish ($R_a < 0.4 \text{ Mm}$).
- * Long Tool Life At High Cutting Speeds = Reduced Cycle Cost.
- * Oxidation Resistance = Stable Performance In Dry/Semi-Dry Machining.





TURNING TO

Technical highlights

- * Rigid Clamp Design Reduces Vibration & Insert Pull-Out.
- * Hardened Body Ensures Dimensional Stability.
- * Available For Negative & Positive Inserts.



OL HOLDERS

Marketing Value

- * Stable Machining = Better Part Accuracy.
- * Less Vibration = Smooth Finishes.
- * Robust Design = Long Service Life.

BORING BAR

Technical Highlights

- * Solid Carbide & Steel Shank Options.
- * Anti-Vibration Design For Deep Boring.
- * Precision Insert Pockets For Accuracy

Marketing Value

- * Stable Performance = Precise Bores.
- * Deep Boring Capability = Extended Applications.
- * Reduced Scrap = Improved Process Reliability.



SOLID CARBIDE END MILLS

Technical Highlights

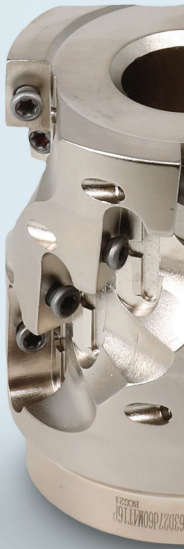
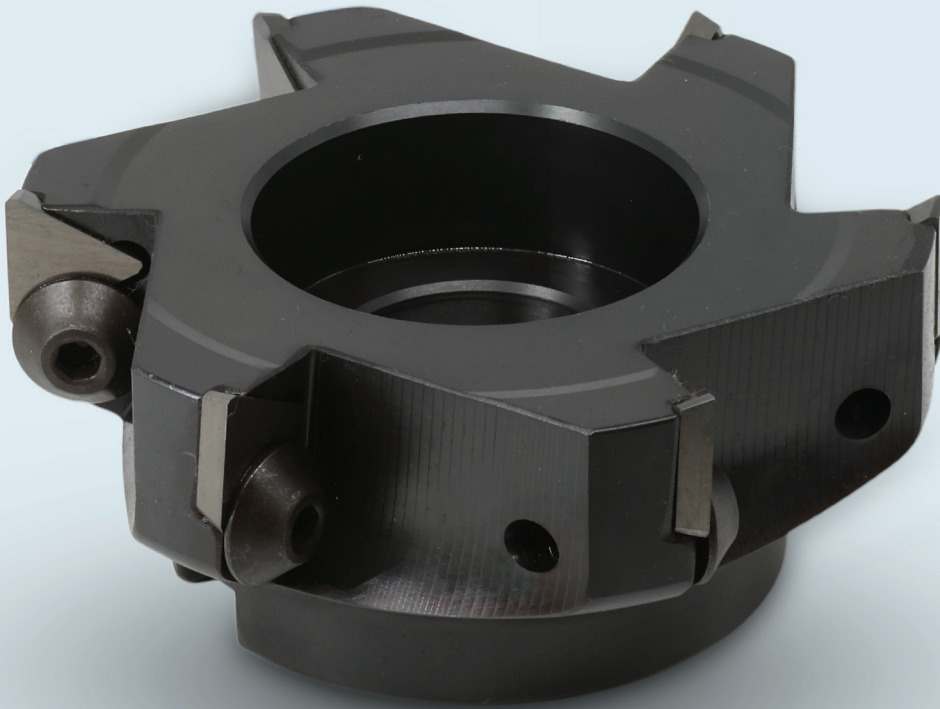
- * Premium Carbide With High Hardness & Toughness.
- * 2/4/6 Flute Options For Slotting, Profiling & Finishing.
- * TiAlN/TiSiN Coating For High-Speed Machining.

Marketing Value

- * Higher Metal Removal Rate = Faster Production.
- * Superior Tool Life = Less Downtime.
- * Excellent Surface Finish = Premium Part Quality.



INDEXABLE TOOLS

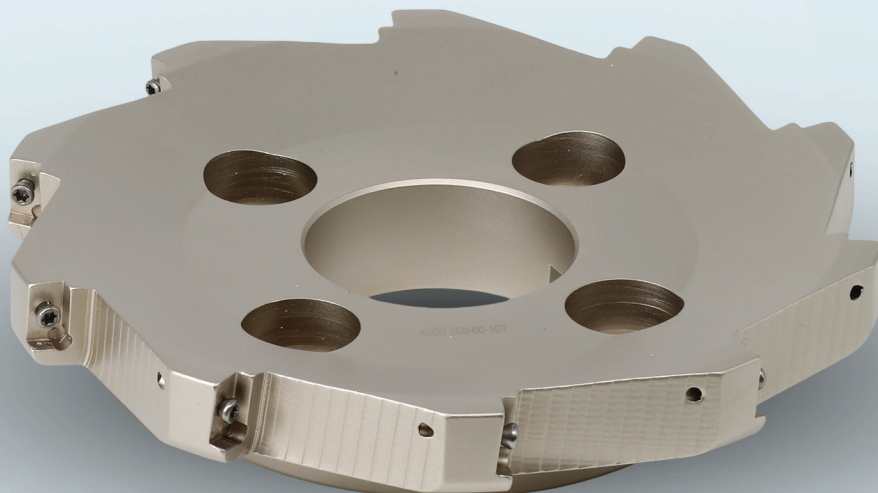


Technical Highlights

- * Multi-Insert Pockets For Balanced Load.
- * Cutter Body With Optimized Pocket Design.
- * Suitable For Steels, Cast Iron, And Alloys.

Marketing Value

- * Fast Metal Removal = Higher Productivity.
- * Reduced Chatter = Stable & Accurate Faces.
- * Cost-Effective = Only Inserts Need Replacing.





metaldur

MFWN90-63R-5T

metaldur

metaldur

FORCE.COM

7NMU8 63-22-5T

400R 80-22

LNMU3 80-27

15*31



DRILLS

Technical Highlights

- * Solid Carbide Drills For High Precision & Speed.
- * Coolant-Through Design For Efficient Chip Evacuation.

Marketing Value

- * Faster Cycle Time = More Parts Per Hour.
- * Reliable Hole Quality = Fewer Rejects.
- * Lower Cost Per Hole = Higher Profitability..

15*3T

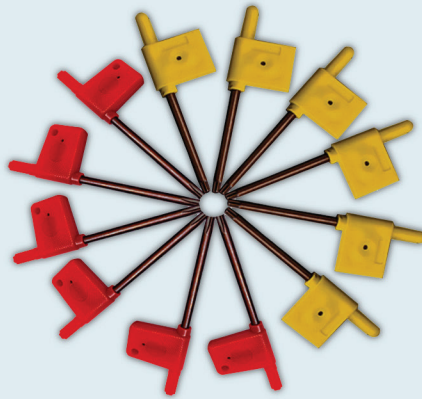
COLLETS & ACCESSORIES

Technical Highlights

- * High-Precision Balancing For High Rpm.
- * Rigid Clamping With Low Runout.
- * Wide Range: End Mill Holders, Er Collets, Hydraulic Chucks.

Marketing Value

- * Extended Tool Life = Better Economics.
- * High-Speed Stability = Faster Production Cycles.
- * One-Stop Range = Complete Holding Solution.





metaldur

CUTTING TOOLS



+91 70215 83452



sales@carbiforce.com

POWERED BY **CARBIFORCE**